
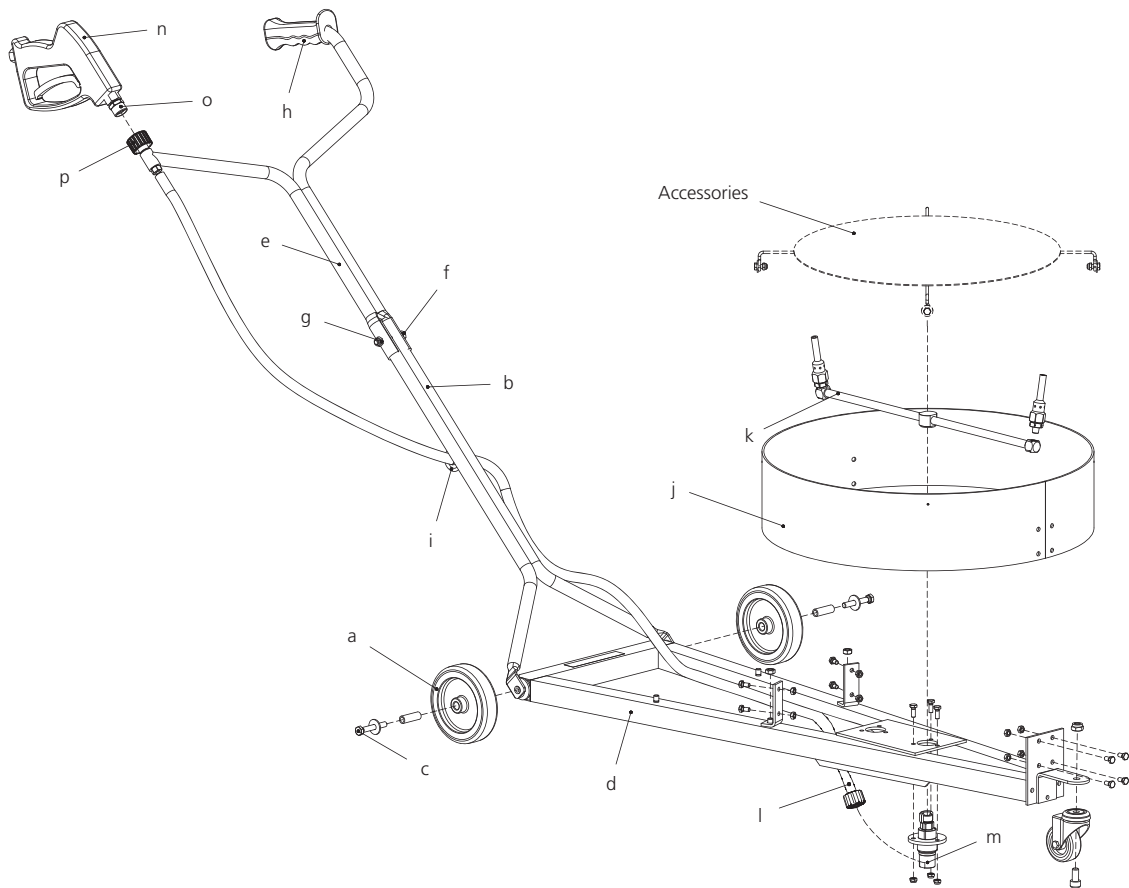



Assembly instructions

 (This instruction is valid for the base model as well as for the resulting versions)



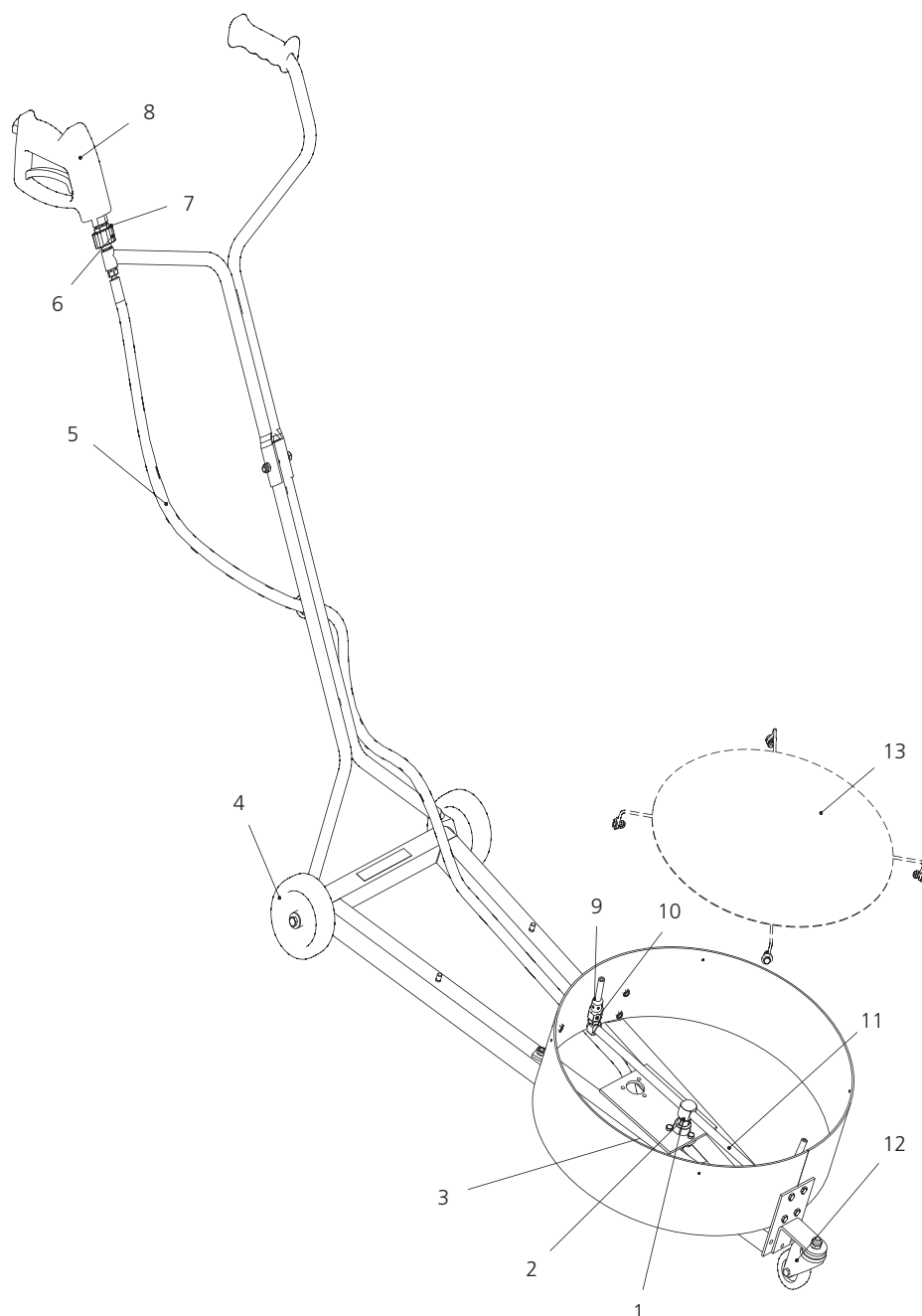
1. Dismount both wheels (a).
 2. Install the lower fork (b) with the bolts (c) with the wheels (a) to the rack (d).
 3. Slide the upper fork (e) over the lower fork (b). Secure the two forks with the bolt (f) and the safety nut (g).
-  **Note:** the handle (h) and the ring (i) point in the same direction.
4. The protection ring (j) and the rotor arm (k) are as factory installed.
The HP-hose (l) is already connected with the Swivel (m).
 5. Connect the HP-gun (n) with the preinstalled adapter (o) to the quick connect (p).



For your own safety

- Read all instructions before the initial operation. Check their proper condition and that they operate safely.
- Always use protection gear when using products connected to high pressure.
- Before any maintenance or nozzle-change, turn off the high pressure water supply, e.g.: turn off and secure the power switch.
- After turning off the system, allow all self propelled equipment to come to a complete stop before handling.
- Safety regulations and guidelines (Accident Prevention Rules) from the manufacturer of your high pressure cleaner are applicable.
- Nozzle installation according to nozzle manufacturer.
- Do not move the unit over objects or uneven surfaces.
- Do not lift up the unit while operating.
- Do not run the unit if spray-arm is out of balance or bent, damage to the swivel will result.
- No modifications to the unit are permitted.
- The equipment may be installed and used only by particularly trained technical personnel.

Spare parts List



Pos.	Part No.	Description	
1	58.553	Swivel DYF	90°
2	36.905	Carbide seal-kit	
3	50.155	Quick-Connect	M22-F - G1/4"F
4	900.933	Rubber wheel	Dia. 5"
5	903.325	HP-hose	G1/4"KM - G1/4"KM
6	50.903	Quick-connect	M22-F - G1/4"M
7	51.278	Adaptor	M22-M - 1/4"NPT-M
8	29.081	HP-gun	4000 psi
9	14.902	Stabilizer Nozzle	
10	18.030EG	Insert Nozzle	
11	82.891	Turbo-rotor-arm	Dia. 18.5"
12	900.932	Stainless steel castor	

Accessoires

13	80.621	Guard
----	--------	-------